



**GENERATION HOMES**  
N O R T H W E S T

# The Dover

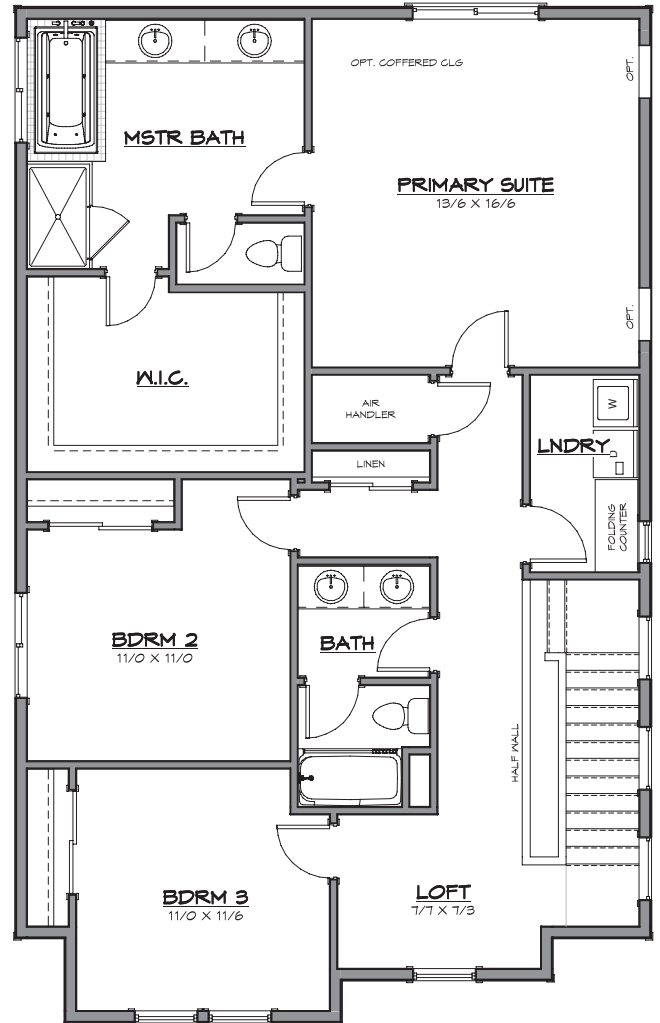
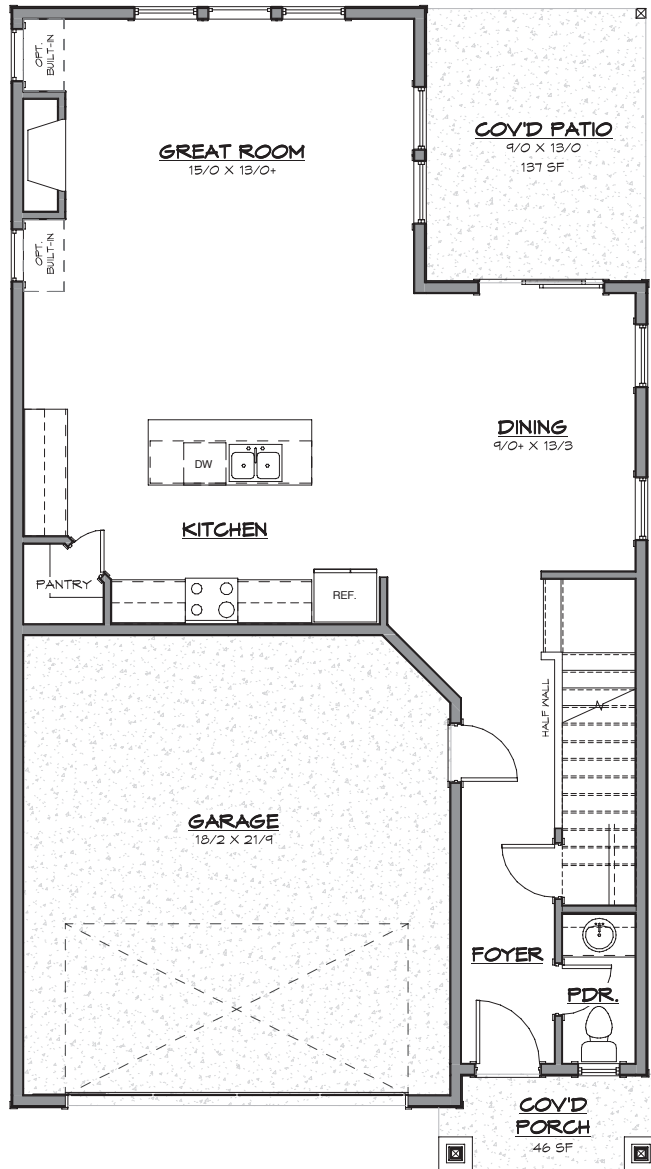
2252



- 2021 Building Excellence Award "Best New Home 750k-1M"
- 2021 New Homes Tour "Best of Show Under 750k"
- 2021 Clark County BIA Building "Excellence Award"
- 2021 Parade of Homes "Industry Choice" and "People's Choice" Award
- 2019 Building Excellence Award "Best New Home \$800k-\$1M"
- 2018 New Homes Tour "Most Livable Floor Plan"



**GENERATION HOMES**  
N O R T H W E S T



**Total SqFt: 2252**

Bedrooms: 3

Bathrooms: 2.5

Garage: 2-car