



GENERATION HOMES
N O R T H W E S T

The Greenfield

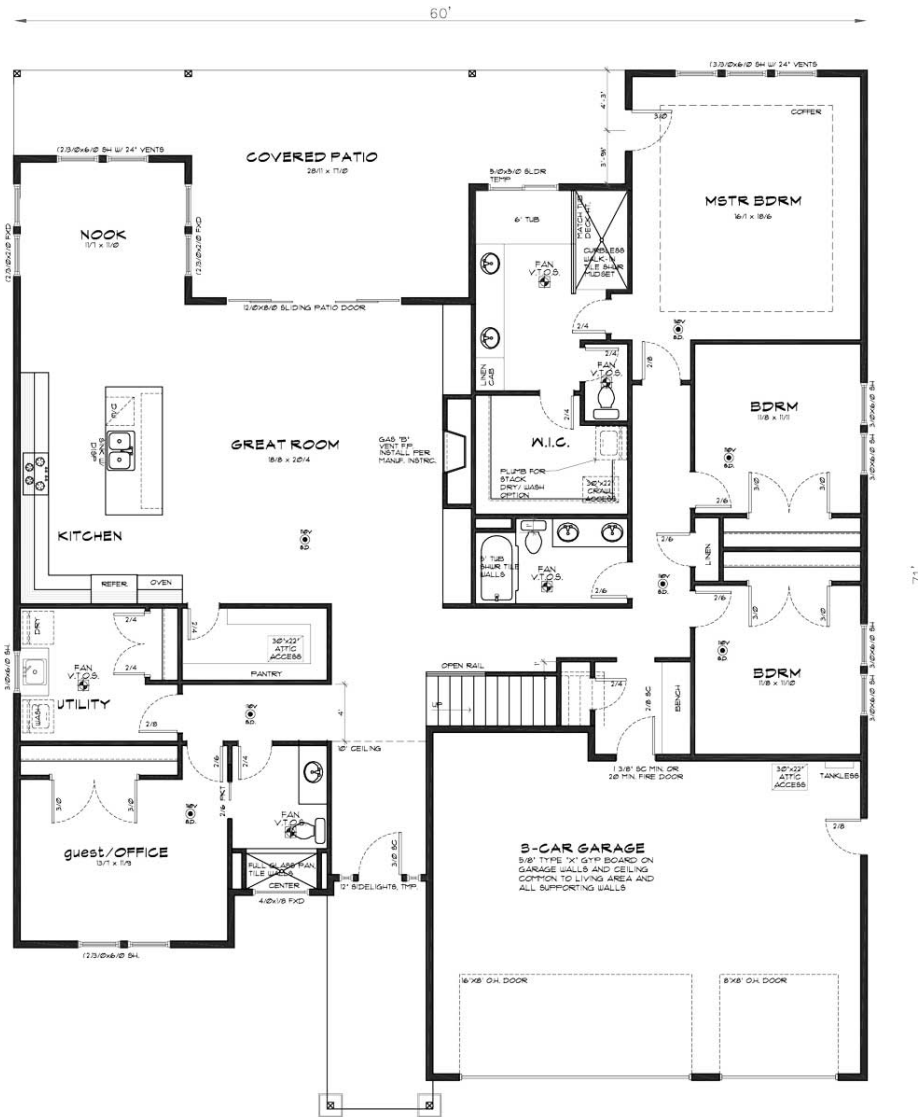
3262



- 2018 New Homes Tour "Most Livable Floor Plan"
- 2017 Clark County BIA Builder of the Year
- 2017 Clark County Parade of Homes Winner "Best in Show"
- Building Excellence Award 2017 - Best New Home \$350,000 - \$500,000



GENERATION HOMES
N O R T H W E S T

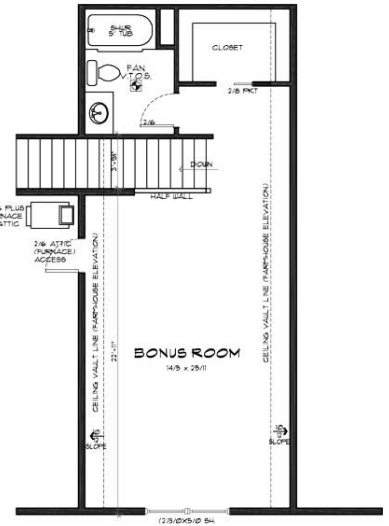


MAIN FLOOR PLAN - 2744 SF

SCALE: NTS

3262

MAIN FLOOR	=	2744 SQ.FT.
BONUS	=	518 SQ.FT.
TOTAL	=	3262 SQ.FT.
GARAGE	=	714 SQ.FT.



BONUS PLAN - 518 SF

SCALE: NTS

Total SqFt: 3262

Bedrooms: 3

Bathrooms: 3.5

Garage: 3-car

Bonus: Office, Bonus Room

