



GENERATION HOMES
N O R T H W E S T

The Rosemount

2612



GENERATION HOMES
N O R T H W E S T

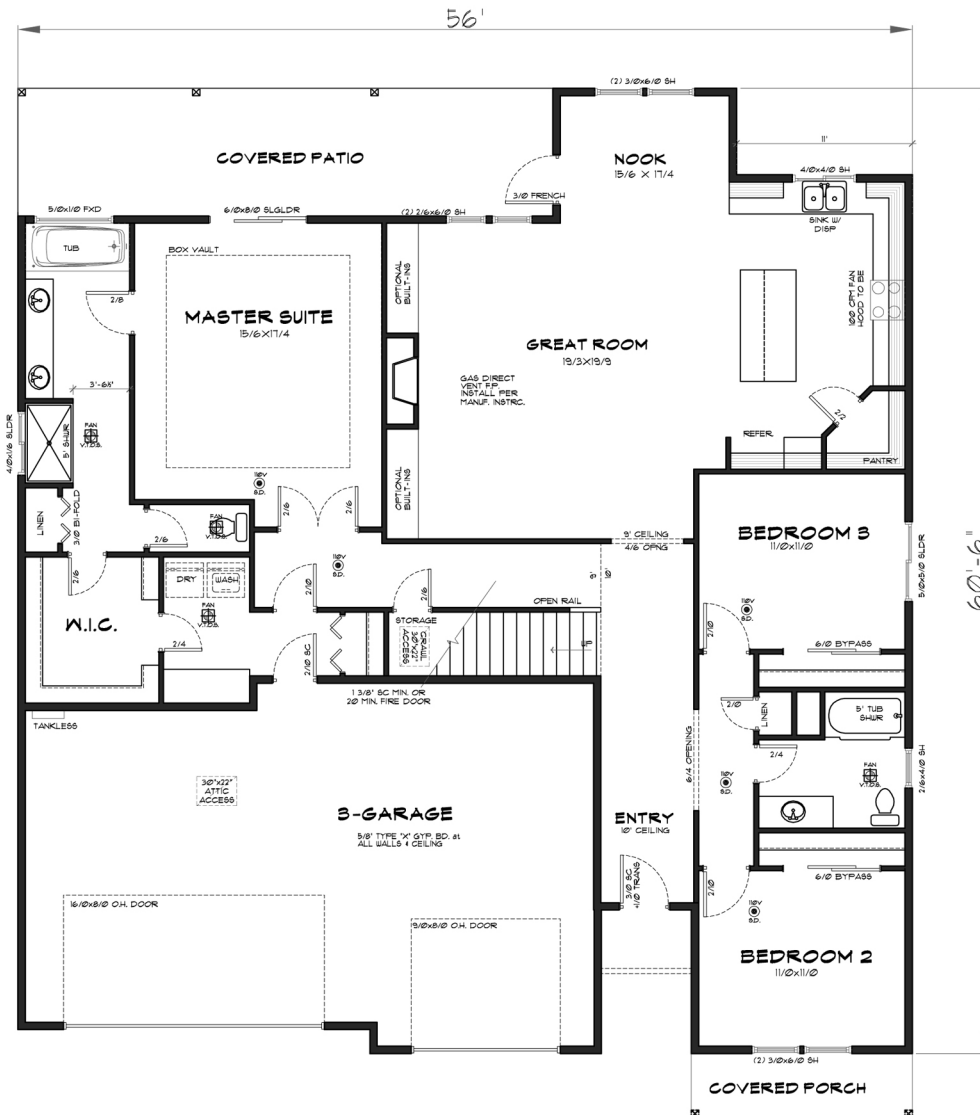
2018 New Homes Tour "Most Livable Floor Plan"
2017 Clark County BIA Builder of the Year
2017 Clark County Parade of Homes Winner "Best in Show"
Building Excellence Award 2017 - Best New Home \$350,000 - \$500,000

Total SqFt: 2612

Bedrooms: 3 +Office

Bathrooms: 2.5

Garage: 3-car

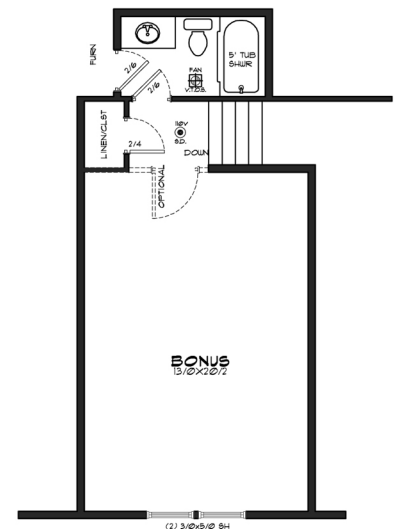


MAIN FLOOR PLAN

SCALE - NTS

2612

UPPER FLOOR	=	418 SQ.FT.
MAIN FLOOR	=	2194 SQ.FT.
TOTAL	=	2612 SQ.FT.
GARAGE	=	693 SQ.FT.



UPPER FLOOR IN ATTIC TRUSSES

SCALE - NTS